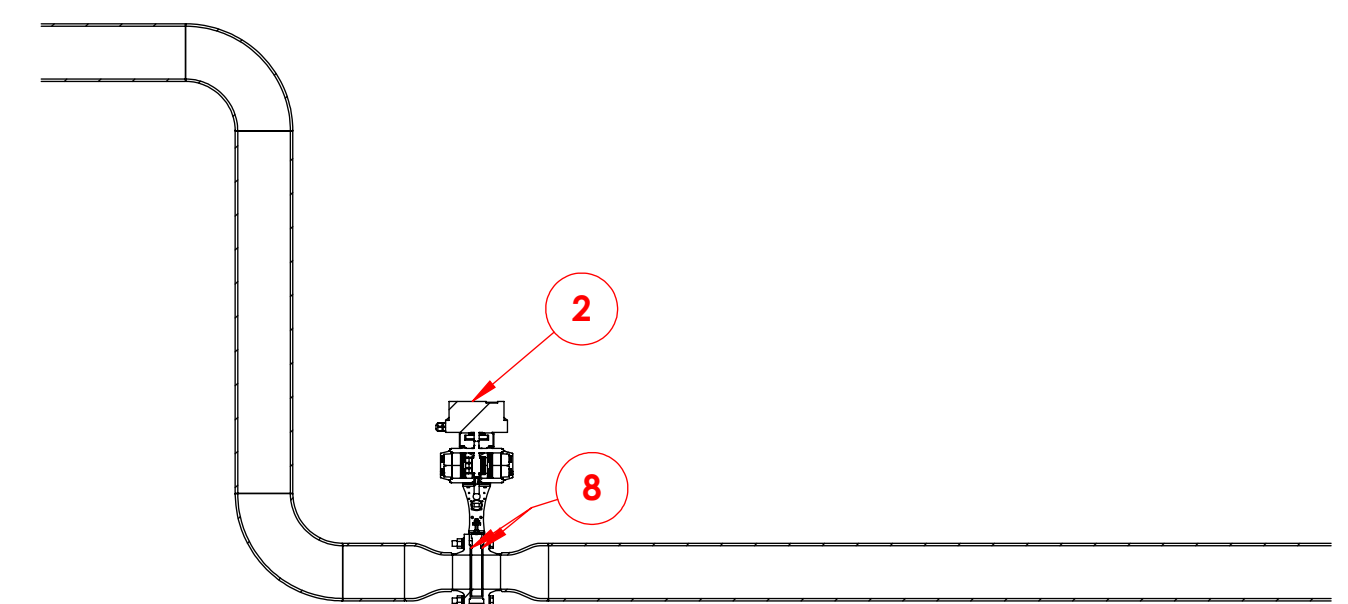


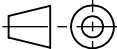
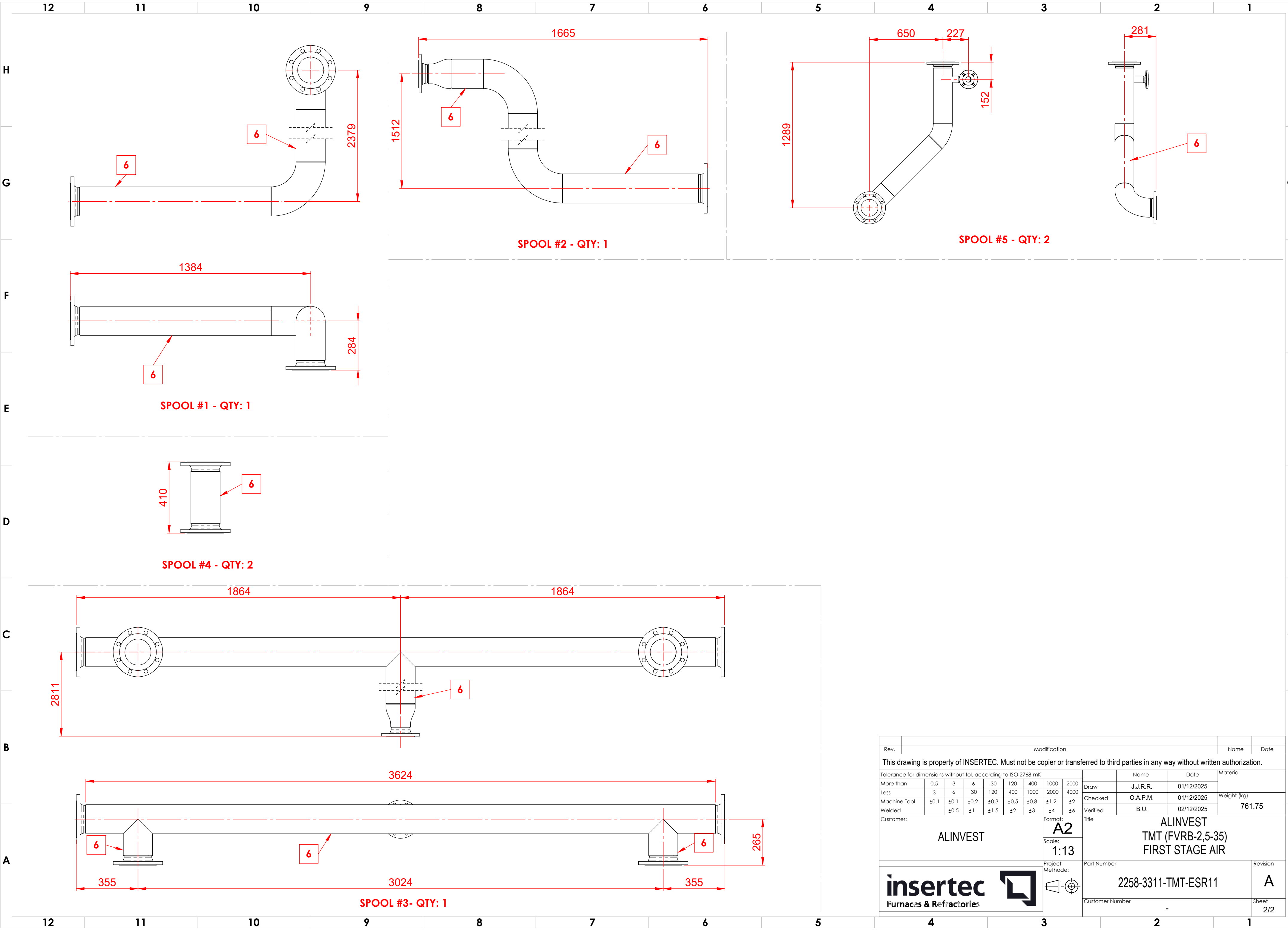

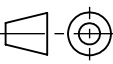


18	NUT DIN 934 M20-A4	A	NUT M20	A4			0.06	80	4.8
17	DIN127-M20-A4	A	WASHER M20	A4			0.02	80	1.6
16	DIN125-M20-A4	A	WASHER M20	A4			0.02	160	3.2
15	DIN933-M20X150-A4-80	A	BOLT M20X150	A4			0.46	8	3.68
14	DIN933-M20X130-A4-80	A	BOLT M20X130	A4			0.41	32	13.12
13	DIN933-M20X90-A4-80	A	BOLT M20X90	A4			0.31	40	12.4
12	DIN934-M16-A4-80	A	NUT M16	A4			0.03	8	0.24
11	DIN127-M16-A4	A	WASHER M16	A4			0.01	8	0.08
10	DIN125-M16-A4	A	WASHER M16	A4			0.01	16	0.16
9	DIN933-M16X110-A4-80	A	BOLT M16X110	A4			0.22	8	1.76
8	DIN 2690		GASKET - KLINGERSIL C-4430 - 3 THK. - DN100	FIBERGLASS W/NBR			-	2	0
7	DIN 2690		GASKET - KLINGERSIL C-4430 - 3 THK. - DN150	FIBERGLASS W/NBR			-	15	0
6	EN 10217-7 -SS316L		TUBE 6" - 4.5 THK - WELDED PIPE	AISI 316L			0	14510mm	0
5	EN 10217-7 -SS316L		TUBE 2" - 2.9 THK - WELDED PIPE	AISI 316L			0	322mm	0
4	PID 490		BUTTERFLY VALVE FOR INSTALLATION BETWEEN 2 FLANGES DN150, INCL. STEP SEAT SEALING, FOR AIR, WITH PNEUMATIC ACTUATOR, SINGLE-ACTING, OPEN/CLOSE IN 1 SECOND 5 BAR COMPRESSED AIR WITH 3/2-WAY SOLENOID VALVE 24VDC LEAKAGE APPROX. 0.02% OF KV 90°, PN 10, INCL. POSITION SWITCH 24VDC OPEN/CLOSE, 2-WIRE	COMMERCIAL			14.79	2	29.58
3	PID 460		BUTTERFLY VALVE FOR INSTALLATION BETWEEN 2 FLANGES DN 150 PN 10 FOR AIR, WITH HANDLE	COMMERCIAL			7.63	2	15.26
2	PID 450	-	CONTROL BUTTERFLY VALVE FOR INSTALLATION BETWEEN 2 FLANGES DN 100 PN 10 FOR AIR, JASTA GD6, COMPLETE ASSEMBLED WITH PNEUMATIC ACTUATOR, OPEN/CLOSE IN 3 - 5 SECONDS MAX., AND SIEMENS SIPART PS 2, TYPE: 6DR5010-0NG01-0AA0-Z C20, 4-20 MA IN- AND OUTPUT, 24VDC.	COMMERCIAL			29.53	1	29.53
1	PID 420	-	MEASURING ORIFICE FOR AIR, INSTALLATION BETWEEN 2 FLANGES DN150, V= 844 NM3/H, PE= 90 MBAR, DIFFERENTIAL PRESSURE : 15 MBAR	COMMERCIAL			2.83	1	2.83
Nº	PART NUMBER / ARTICLE CODE	REV.	DESCRIPTION	MATERIAL	MANUFACTURER	TAG	WEIGHT (KG)	QTY.	TOTAL WEIGHT (KG)



Rev.	Modification										Name	Date		
This drawing is property of INSERTEC. Must not be copied or transferred to third parties in any way without written authorization.														
Tolerance for dimensions without tol. according to ISO 2768-mK								Name		Date		Material		
More than		0.5	3	6	30	120	400	1000	2000	Draw	J.J.R.R.	01/12/2025	Weight (kg)	
Less		3	6	30	120	400	1000	2000	4000					
Machine Tool		±0.1	±0.1	±0.2	±0.3	±0.5	±0.8	±1.2	±2	Checked	O.A.P.M.	01/12/2025		
Welded			±0.5	±1	±1.5	±2	±3	±4	±6	Verified	B.U.	02/12/2025		761.75
Customer:								Format:		Title				
ALINVEST								A2		ALINVEST TMT (FVRB-2,5-35) FIRST STAGE AIR				
								Scale:						
								1:22						
 								Project Methode:		Part Number				Revision
										2258-3311-TMT-ESR11				A
										Customer Number				Sheet
										- 1/2				



Rev.										Modification										Name		Date					
This drawing is property of INSERTEC. Must not be copier or transferred to third parties in any way without written authorization.																											
Tolerance for dimensions without tol. according to ISO 2768-mK												Name		Date		Material											
More than		0.5		3		6		30		120		400		1000		2000		Draw		J.J.R.R.		01/12/2025		Weight (kg) 761.75			
Less		3		6		30		120		400		1000		2000		4000		Checked		O.A.P.M.		01/12/2025					
Machine Tool		±0.1		±0.1		±0.2		±0.3		±0.5		±0.8		±1.2		±2		Verified		B.U.		02/12/2025					
Welded				±0.5		±1		±1.5		±2		±3		±4		±6											
Customer:										Format: A2				Title ALINVEST TMT (FVRB-2,5-35) FIRST STAGE AIR													
ALINVEST										Scale: 1:13																	
 insertec Furnaces & Refractories										Project Methode:				Part Number										Revision			
														2258-3311-TMT-ESR11										A			
										Customer Number										Sheet 2/2							